



the play inspection company

Annual Inspection

Farthinghoe Parish Council

Farthinghoe Play Park

New Road, Farthinghoe, Brackley, Northamptonshire,
NN13 5PS



API Associate



Unit 5, Glenmore Business Park, Blackhill Road, Poole, Dorset, BH16 6NL
t- 01202 590675 e- info@playinspections.co.uk

www.playinspections.co.uk

RPII Inspection Methodology

This document outlines the RPII position on inspections undertaken by the Inspectors listed on the RPII Register of Inspectors for Indoor Annual, Outdoor Annual, Outdoor Operational and Outdoor Routine.

Inspections are undertaken with reference to the standards listed in this preamble only; where no date for the standard is given it the date of the standard will be that current at the time of inspection with the exception of where overlap periods are granted by the standards committee when standards are updated. The information contained in reports is provided to assist the owner/operator in fulfilling their responsibilities as detailed in the relevant standard. Other standards referenced within the listed standards do not form part of the inspection.

The following standards are relevant to all installations of equipment that are publicly accessible to users; this would include public parks, pay and play parks, schools, nurseries, public houses, holiday parks, indoor play centres, farm parks etc. All equipment used or employed in publicly accessible areas should meet with the requirements of the relevant standards (listed below);

BS EN 1176 Parts 1, 2, 3, 4, 5, 6, 10 & 11 Playground equipment intended for permanent installation outdoors & indoors.

BS EN 1176 Part 7 - 'Guidance on Installation, Inspection, Maintenance and Operation' (this document gives guidance to the owners/operators of the facility on the installation, inspection, maintenance and operation of playground equipment, including ancillary items).

Domestic play equipment falls outside of the scope of BS EN 1176 and has its own standard (BS EN 71 – Safety of Toys). Where domestic equipment can be identified this will be acknowledged in the report but any comments concerning compliance within the inspection will still refer to BS EN 1176.

Other equipment that is not clearly identified as unsupervised or domestic (natural play, self-build equipment etc.) will be assessed for compliance with the relevant standard listed below:

BS EN 15312 - Free access multi-sports equipment

BS EN 14974 - Skateparks

BS EN 16630 - Permanently installed outdoor fitness equipment

BS EN 16899 - Parkour equipment (plus RPII/API guidance notes)

Annual and Post Installation inspections will take into consideration compliance with current standards and defects related to wear and vandalism. Items not listed in the report have not been included in the inspection. The inspection will cover the playground equipment and the active area up to 3.0 metres around, or the fence line if closer.

Operational inspections only take into consideration defects related to wear and vandalism. Routine visual inspections (if undertaken) relate only to the most obvious defects such as broken or missing parts, vandalism and issues created by severe weather conditions (the intention is to identify hazards created by storm damage).

The inspection is non-dismantling, non-destructive and does not include for any structural, toxicology or impact assessments defined in the standard; however, the inspector will undertake a manual test for stability and if equipment fails under manual load, or any other hazard is identified as an unacceptable risk, the owner/operator will be notified as soon as practicably possible.

The inspector will access all standing surfaces as necessary on the equipment and assess all parts up to 2.5m above the standing surface. Where it is not possible to access parts of the equipment without employing an alternative means of access the report will record the action required by the owner/operator to ensure the continued safe use of the equipment. Ancillary equipment will be assessed using the inspector's knowledge and experience of the standards named in this document to ensure as far as is reasonably practicable the continued safe use of the items concerned. The owner/operator is responsible for the overall safety of the equipment and area. Inspectors who are trained to use ladders may use them where it is safe to do so, but if members of the public are present on-site ladders may not be used to access the equipment.

The inspector will not undertake any of the following works unless specifically agreed in writing at the time of order:

Checking the depth and underlying structural integrity of any surface areas and/or carrying out any testing of impact absorbing properties of any surfaces. The identification of any corrosion, rot or other deterioration in any apparatus or equipment other than by an external inspection or the inspection of any equipment (or part thereof) that is underground. Tightening any bolts, hinges or other fixing devices on any apparatus or equipment. Assessing or inspecting any electrical installations contained on any site and/or apparatus and/or equipment. Assessing or inspecting any water supplies and/or water features and/or any associated computerised systems (including carrying out any programming).

Where planting or trees are mentioned in the report no aboricultural or horticultural assessments of toxicity, suitability or condition are undertaken; the owner/operator should have suitable inspections provided by a competent person.

The owner/operator should have a 'design risk assessment' provided by the manufacturer/designer of the area for the equipment and location in which the facility is installed.

The operator is responsible for managing risks of their provision and is required by law to carry out a 'suitable and sufficient assessment' of the risks associated with a site or activity and this inspection shall be considered as contributing to the operator's discharge of this responsibility.

The details contained within the report are a snapshot of the condition at the time of inspection only and subsequent events may affect the condition of the facility. Suggested remedial actions are based on the knowledge and experience of the inspector and/ or that of the inspection company. The owner/operator should seek the advice of the manufacturer or a competent person at all times when undertaking repairs and/or modifications to equipment.

A full copy of the Play Inspection Company Ltd. Terms & Conditions is available on our website (www.playinspections.co.uk)

Table 1

The operator is responsible for following the guidance of the relevant standards. The standards give guidance on the installation, inspection, maintenance and operation of the various types of facilities. The inspection guidance is listed in Table 1, with an indication of which parts will be included in an RPII Annual or Post-Installation Inspection. The relevant standards also contain additional parts which the operator should follow.

Inspection recommendations of relevant standards Refer to relevant standards for full text	Annual Main	RPII Annual Outdoor/ Fully enclosed Inspection
6.1 d) Overall levels of safety of equipment (see note 1)	✓	✓ [1]
6.1 d) Overall levels of safety of foundations (see note 1)	✓	✓ [1]
6.1 d) Overall levels of safety of playing surfaces (see note 2)	✓	✓ [2]
6.1 d) Compliance with the relevant parts of the standard and or risk assessment (see note 3)	✓	✓ [3]
6.1 d) Effects of weather	✓	✓
6.1 d) Presence of rot, decay or corrosion (see note 1)	✓	✓ [1]
6.1 d) Assessment of repairs made or added or replaced components (see note 4)	✓	✓ [4]
6.1 d) Excavation or dismantling/additional measures	✓	✗
6.2.1 Assessment of glass reinforced plastics (see note 5)	✓	✓ [5]
6.2.1 Inspection of one post equipment (see note 1)	✓	✓ [1]
6.2.4 Undertaking the Operators inspection protocol	✓	✗

NB: The clause numbers in table 1 are taken from BS EN 1176 - Part 7:2020. The content is equally applicable to all other relevant standards listed herein. Playgrounds contain a range of equipment from different manufacturers and installed over a number of years; operators should implement any guidance provided by the manufacturer. Item specific detail is not readily available to RPII Playground Inspectors, whose report contributes to the operator's overall Annual Main Inspection as detailed in the relevant standards.

[1] A manual test only is undertaken for stability. Wear and instability are only detectable where readily apparent without dismantling or destruction and without the use of tools, excavation or specialist equipment. Rot and corrosion are tested or with a hammer and/or steel rod. Decay in timber may exist which can only be found with specialist equipment.


[2] Only the visible condition and dimensional compliance of surface extent is considered. Neither testing of impact attenuating properties nor measurement of the thickness of bound surfaces are undertaken on RPII annual inspections.

[3] The inspection assesses compliance where this can be tested on site using manual methods without dismantling, destruction and without the use of tools or specialist equipment.

[4] The operator should use manufacturer's recommended parts, or equivalent. We are unable to verify if such parts have been used, and any subsequent change in quality or performance

[5] Visible glass fibres will be noted in reports. The operator is responsible for repairs or replacement.

Risk Assessment Matrix

			Scores in the report are multiplication factors of Likelihood x Severity					
			Severity>>					
Likelihood	Very High probability, if the situation is not addressed an accident is almost certain.	5	Very High	VL (5)	L (10)	M (15)	H (20)	VH (25)
	High probability an accident is probable without any added factor.	4	High	VL (4)	L (8)	M (12)	H (16)	H (20)
	Moderate probability an incident is foreseeable.	3	Moderate	VL (3)	L (6)	L (9)	M (12)	M (15)
	Some probability, requires a combination of factors to take place.	2	Low	VL (2)	VL (4)	L (6)	L (8)	L (10)
	No significant probability; lightning strike, freak accident.	1	Very Low	VL (1)	VL (2)	VL (3)	VL (4)	VL (5)
				Very Low	Low	Moderate	High	Very High
				1	2	3	4	5
				No injury likely e.g. damaged or soiled clothing, minor bruising, grazes	Minor injury, laceration or bruising requiring first aid only	Injury requiring medical intervention e.g. cuts requiring stitches	Serious injury including concussions or fracture of long bones	Severe injury involving a potential life changing injury or fatality
				Severity>>				
Note 1: The total risk scores included within our reports are a multiplication factor of the calculated Likelihood and Severity of each finding. Both Likelihood and Severity are given a number between 1 - 5 as shown on the matrix above and these two numbers are then multiplied together to give the total risk score that is shown against defects on the report. Total risk scores can be divided in both directions, i.e. a total risk score of 12 could be a Likelihood (3) x Severity (4) or Likelihood (4) x Severity (3).								
Note 2: When we inspect we only see a snapshot of the current condition of the equipment. It is the operators responsibility to ensure that there is a continuing level of maintenance to keep the equipment in good working order and the site fit for use.								

Equipment has been assessed to the following standards where relevant:

BS EN 1176 Parts 1-11 (Playground equipment and surfacing)
 BS EN 14974 (Facilities for users of roller sports equipment)
 BS EN 15312 (Free access multi-sports equipment)
 BS EN 16899 (Parkour Equipment)
 BS EN 16630 (Outdoor Fitness Equipment).



Farthinghoe Play Park

Inspection Ref: 1454722

Site Ref: 73570

Inspected: 3-September-2021 - 14:06 by Jamie Leeson

Risk Assessment: 10 Low Risk



Location:

The site is located in an area of public open space and is not directly overlooked by any properties in the local community.

Disabled Access:

Some accessible features; an area that presents difficulties to the majority of people with disabilities but in favourable circumstances and certainly in partnership can be accessed.



5 - Very Low Risk

Item: Site General
Manufacturer: Owner/Operator
Surface Type: N/A
Item Quantity: 1
Equipment Compliance: N/A
Surface Area Compliance: N/A

Total Findings: 1



Finding 1

It is recommended that signage, with information including the site address, contact information for maintenance issues and emergency contact details are provided for the facility - Provide in accordance with the recommendations

8 - Low Risk

Item: Gate - Pedestrian
Manufacturer: Owner/Operator
Surface Type: Gravel
Item Quantity: 1
Equipment Compliance: N/A
Surface Area Compliance: N/A

Total Findings: 1



Finding 1

There are openings that are less than 12mm that could trap or crush fingers - Where possible a 12mm gap should be maintained on both sides or between the gate leaves



i 8 - Low Risk

Item: Gate - Maintenance
Manufacturer: Owner/Operator
Surface Type: Gravel
Item Quantity: 1
Equipment Compliance: N/A
Surface Area Compliance: N/A

Total Findings: 1



Finding 1

There are projecting bolt thread(s) present - Remove excess thread length and deburr or provide cap

i 8 - Low Risk

Item: Fencing - Timber
Manufacturer: Owner/Operator
Surface Type: Grass
Item Quantity: 1
Equipment Compliance: N/A
Surface Area Compliance: N/A

Total Findings: 3



Finding 1

There are a number of loose posts around the fence - Monitor for any further deterioration and reset as required

Finding 3

Parts of the timber are rough or splintered - Remove all rough or sharp edges

Finding 2

There are projecting nail ends present - Remove and provide more appropriate fixings if required



i 8 - Low Risk

Item: Picnic Table
Manufacturer: Owner/Operator
Surface Type: Grass
Item Quantity: 2
Equipment Compliance: N/A
Surface Area Compliance: N/A

Total Findings: 3



Finding 1

There is some evidence of rot in the timber - Monitor for any further deterioration and replace as required

Finding 3

A number of fixing(s) have worked loose - Secure all loose fixings

Finding 2

The table is not secured to the ground and there is some potential for the item to be moved within falling spaces of equipment - Secure the item to the ground



i 10 - Low Risk

Item: Multi Play (Junior)
Manufacturer: Not Identified
Surface Type: Woodchip
Item Quantity: 1
Equipment Compliance: No
Surface Area Compliance: No



Total Findings: 14

Finding 1

The depth of the loose fill surfacing is lower than the recommended depth specified in BS EN 1176; the free height of fall of the equipment is less than 2.0m and a minimum of 300mm depth should be provided (including an extra 100mm to allow for compaction and displacement as per BS EN 1176 Part 1 - Table 4) - Top up loose fill surfacing to recommended levels

Finding 3

The unit is easily accessible and should have the appropriate barriers installed to meet the requirements of BS EN 1176 Part 1 as the height of the unit exceeds 600mm - Monitor - No remedial work recommended

Finding 5

There is/are finger entrapment/s in the frame and the item fails to meet the requirements of BS EN 1176 Part 1 4.2.7.6 Entrapment of fingers - Monitor - No remedial work recommended

Finding 7

A number of fixing(s) have worked loose - Secure all loose fixings

Finding 9

The item has exposed edges and corners with a radius of less than 3mm and fails the requirements of BS EN 1176 - Provide a 3mm radius to all exposed edges and corners

Finding 11

This design of swing joint has been known to fail on the weld connecting the joint to the threaded stud - We would recommend that the joint be dismantled and checked on a regular basis or a Secondary Safety Device be fitted

Finding 2

The height of the barrier(s) is insufficient and fails to meet the requirements of BS EN 1176 Part 1 - Monitor - No remedial work recommended

Finding 4

The platform provides access to a steep play element via a barrier with a width exceeding 1200mm and this fails to meet the requirements of BS EN1176 Part 1. - Monitor - No remedial work recommended

Finding 6

The height of the slide runout is in excess of 200mm and fails the requirements of BS EN 1176 Part 3 - Top up surfacing to comply

Finding 8

There is or are fixings missing on the item - Replace all missing fixings

Finding 10

Swing bays and/or their beams should only be attached to other equipment where specific measures are undertaken to segregate them from other activities such as enclosures, swing barriers or a 1500mm area - Monitor - No remedial work recommended

Finding 12

A number of fixing(s) have worked loose - Secure all loose fixings



Finding 13

The surfacing dimensions are short and do not meet with the requirements of the current applicable standard - Monitor - no remedial action recommended

Finding 14

There is surface corrosion present on the fixings - Replace the corroded fixings

8 - Low Risk

Item: Log Climber
Manufacturer: Not Identified
Surface Type: Woodchip
Item Quantity: 1
Equipment Compliance: No
Surface Area Compliance: No

Total Findings: 7



Finding 1

The surfacing dimensions are short and do not meet with the requirements of the current applicable standard - Monitor - no remedial action recommended

Finding 2

There are falls in excess of 600mm between adjacent components on the structure, in contravention of the recommendations set out in BS EN 1176 Part 1; 4.2.8.4 - Monitor - No remedial work recommended

Finding 3

The net anchor forms a hard object within the impact area of the equipment in contravention of the requirements of BS EN 1176 Part 1 - Monitor - No remedial work recommended

Finding 4

The depth of the loose fill surfacing is lower than the recommended depth specified in BS EN 1176 for a fall height over 2.0m. A minimum depth of 400mm is recommended (including an extra 100mm to allow for compaction and displacement as per BS EN 1176 Part 1 - Table 4) - Top up loosefill to recommended levels

Finding 5

The connecting links are in excess of 8.6mm and less than 12mm and fail the requirements of BS EN 1176 Part 1; clause 4.2.13, Chains - Monitor use and replace with compliant links at the next maintenance cycle

Finding 6

The item is slightly loose in its foundations - Monitor for any further deterioration and repair as required

Finding 7

There is/are bolt cap covers missing or damaged on the item - Replace missing or damaged bolt cap covers



8 - Low Risk

Item: Multi Play (Junior)
Manufacturer: Not Identified
Surface Type: Woodchip
Item Quantity: 1
Equipment Compliance: No
Surface Area Compliance: Yes

Total Findings: 10



Finding 1

The depth of the loose fill surfacing is lower than the recommended depth specified in BS EN 1176; the free height of fall of the equipment is less than 2.0m and a minimum of 300mm depth should be provided (including an extra 100mm to allow for compaction and displacement as per BS EN 1176 Part 1 - Table 4) - Top up loose fill surfacing to recommended levels

Finding 2

The net anchor forms a hard object within the impact area of the equipment in contravention of the requirements of BS EN 1176 Part 1 - Monitor - No remedial work recommended

Finding 3

The platform provides access to a steep play element via a barrier with a width exceeding 1200mm and this fails to meet the requirements of BS EN1176 Part 1. - Monitor - No remedial work recommended

Finding 4

The height of the slide runout is in excess of 350mm and fails the requirements of BS EN 1176: Part 3 - Top up surfacing to comply

Finding 5

There is/are finger entrapment/s in the platform and the item fails to meet the requirements of BS EN 1176 Part 1 4.2.7.6 Entrapment of fingers - Monitor - No remedial work recommended

Finding 6

A number of fixing(s) have worked loose - Secure all loose fixings

Finding 7

The item fails to meet the requirements of BS EN 1176 Part 1 4.2.7.2 head and neck entrapment in the barriers and/or steps - Monitor - No remedial work recommended

Finding 8

There is some evidence of rot in the timber - Monitor for any further deterioration and replace as required

Finding 9

There is/are bolt cap covers missing or damaged on the item - Replace missing or damaged bolt cap covers

Finding 10

Parts of the timber are rough or splintered - Remove all rough or sharp edges



i 10 - Low Risk

Item: Basket Swing - Type 1
Manufacturer: Not Identified
Surface Type: Grass Matrix Tiles
Item Quantity: 1
Equipment Compliance: No
Surface Area Compliance: No

Total Findings: 5



Finding 1

The surfacing dimensions are short and do not meet with the requirements of the current applicable standard - Monitor - no remedial action recommended

Finding 3

The edges of the grass mat surface have not been installed in accordance with the API Code of Practice - Tuck in edges of grass mat to remove trip hazards

Finding 5

All fixings have worked loose - Secure all loose fixings

Finding 2

BS EN 1176 requires an additional 0.5m of unobstructed space at each end of the swing surfacing area. This is a relatively low risk finding and no remedial action is recommended at this point. - Monitor - No remedial work recommended

Finding 4

Parts of the timber are rough or splintered - Remove all rough or sharp edges



i 10 - Low Risk

Item: 1 Bay 2 Seat (Flat)
Manufacturer: Not Identified
Surface Type: Grass Matrix Tiles
Item Quantity: 1
Equipment Compliance: No
Surface Area Compliance: No

Total Findings: 7



Finding 1

The edges of the grass mat surface have not been installed in accordance with the API Code of Practice - Tuck in edges of grass mat to remove trip hazards

Finding 3

The surfacing dimensions are short and do not meet with the requirements of the current applicable standard - Monitor - no remedial action recommended

Finding 5

This design of swing joint has been known to fail on the weld connecting the joint to the threaded stud - We would recommend that the joint be dismantled and checked on a regular basis or a Secondary Safety Device be fitted

Finding 7

All fixings are loose - Secure all loose fixings

Finding 2

Fixing Pins have been installed in the impact areas of the grass mats - Remove pins from impact areas

Finding 4

BS EN 1176 requires an additional 0.5m of unobstructed space at each end of the swing surfacing area. This is a relatively low risk finding and no remedial action is recommended at this point. - Monitor - No remedial work recommended

Finding 6

The swing seat connectors are loose - Tighten to secure



Findings information

5 - Very Low Risk (Finding 1)

Item: Ancillary Items - Site General
Manufacturer: Owner/Operator

Risk Level: V - Very Low Risk
Surface: N/A



Finding: It is recommended that signage, with information including the site address, contact information for maintenance issues and emergency contact details are provided for the facility

Action: Provide in accordance with the recommendations



i 8 - Low Risk (Finding 1)

Item: Gates - Gate - Pedestrian
Manufacturer: Owner/Operator

Risk Level: L - Low Risk
Surface: Gravel



Finding: There are openings that are less than 12mm that could trap or crush fingers

Action: Where possible a 12mm gap should be maintained on both sides or between the gate leafs

i 8 - Low Risk (Finding 1)

Item: Gates - Gate - Maintenance
Manufacturer: Owner/Operator

Risk Level: L - Low Risk
Surface: Gravel



Finding: There are projecting bolt thread(s) present

Action: Remove excess thread length and deburr or provide cap



i 6 - Low Risk (Finding 1)

Item: Fences - Fencing - Timber
Manufacturer: Owner/Operator

Risk Level: L - Low Risk
Surface: Grass



Finding: There are a number of loose posts around the fence

Action: Monitor for any further deterioration and reset as required

i 8 - Low Risk (Finding 2)

Item: Fences - Fencing - Timber
Manufacturer: Owner/Operator

Risk Level: L - Low Risk
Surface: Grass



Finding: There are projecting nail ends present

Action: Remove and provide more appropriate fixings if required



i 6 - Low Risk (Finding 3)

Item: Fences - Fencing - Timber
Manufacturer: Owner/Operator

Risk Level: L - Low Risk
Surface: Grass



Finding: Parts of the timber are rough or splintered

Action: Remove all rough or sharp edges

i 6 - Low Risk (Finding 1)

Item: Ancillary Items - Picnic Table
Manufacturer: Owner/Operator

Risk Level: L - Low Risk
Surface: Grass



Finding: There is some evidence of rot in the timber

Action: Monitor for any further deterioration and replace as required



i 8 - Low Risk (Finding 2)

Item: Ancillary Items - Picnic Table
Manufacturer: Owner/Operator

Risk Level: L - Low Risk
Surface: Grass



Finding: The table is not secured to the ground and there is some potential for the item to be moved within falling spaces of equipment
Action: Secure the item to the ground

i 6 - Low Risk (Finding 3)

Item: Ancillary Items - Picnic Table
Manufacturer: Owner/Operator

Risk Level: L - Low Risk
Surface: Grass



Finding: A number of fixing(s) have worked loose
Action: Secure all loose fixings



i 8 - Low Risk (Finding 1)

Item: Activity Equipment - Multi Play (Junior)
Manufacturer: Not Identified

Risk Level: L - Low Risk
Surface: Woodchip



Finding: The depth of the loose fill surfacing is lower than the recommended depth specified in BS EN 1176; the free height of fall of the equipment is less than 2.0m and a minimum of 300mm depth should be provided (including an extra 100mm to allow for compaction and displacement as per BS EN 1176 Part 1 - Table 4)

Action: Top up loose fill surfacing to recommended levels



i 4 - Very Low Risk (Finding 2)

Item: Activity Equipment - Multi Play (Junior)
Manufacturer: Not Identified

Risk Level: V - Very Low Risk
Surface: Woodchip



Finding: The height of the barrier(s) is insufficient and fails to meet the requirements of BS EN 1176 Part 1 **Action:** Monitor - No remedial work recommended



i 6 - Low Risk (Finding 3)

Item: Activity Equipment - Multi Play (Junior)
Manufacturer: Not Identified

Risk Level: L - Low Risk
Surface: Woodchip



Finding: The unit is easily accessible and should have the appropriate barriers installed to meet the requirements of BS EN 1176 Part 1 as the height of the unit exceeds 600mm

Action: Monitor - No remedial work recommended



i 4 - Very Low Risk (Finding 4)

Item: Activity Equipment - Multi Play (Junior)
Manufacturer: Not Identified

Risk Level: V - Very Low Risk
Surface: Woodchip



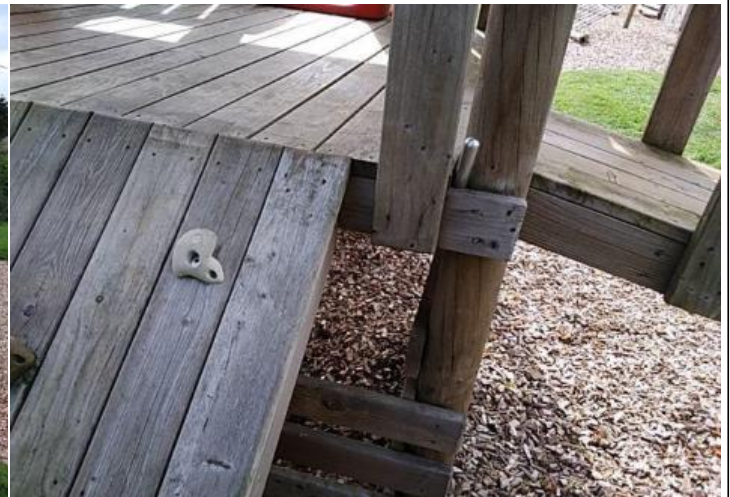
Finding: The platform provides access to a steep play element via a barrier with a width exceeding 1200mm and this fails to meet the requirements of BS EN1176 Part 1.

Action: Monitor - No remedial work recommended

i 5 - Very Low Risk (Finding 5)

Item: Activity Equipment - Multi Play (Junior)
Manufacturer: Not Identified

Risk Level: V - Very Low Risk
Surface: Woodchip



Finding: There is/are finger entrapment/s in the frame and the item fails to meet the requirements of BS EN 1176 Part 1 4.2.7.6 Entrapment of fingers

Action: Monitor - No remedial work recommended



i 6 - Low Risk (Finding 6)

Item: Activity Equipment - Multi Play (Junior)
Manufacturer: Not Identified

Risk Level: L - Low Risk
Surface: Woodchip



Finding: The height of the slide runout is in excess of 200mm and fails the requirements of BS EN 1176 Part 3

Action: Top up surfacing to comply

i 6 - Low Risk (Finding 7)

Item: Activity Equipment - Multi Play (Junior)
Manufacturer: Not Identified

Risk Level: L - Low Risk
Surface: Woodchip



Finding: A number of fixing(s) have worked loose

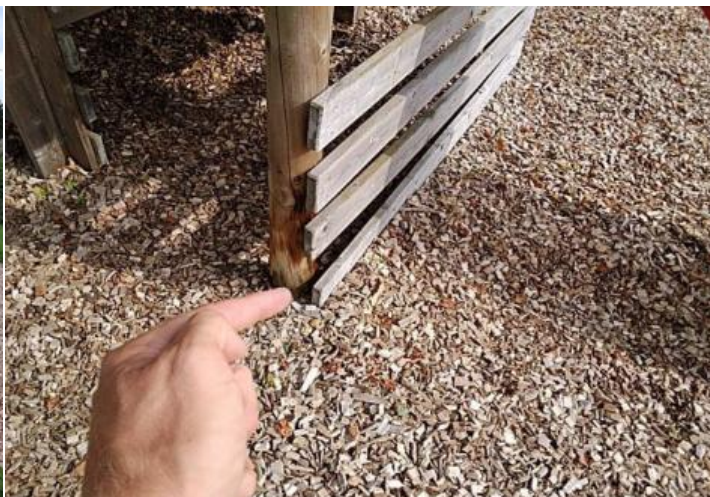
Action: Secure all loose fixings



i 8 - Low Risk (Finding 8)

Item: Activity Equipment - Multi Play (Junior)
Manufacturer: Not Identified

Risk Level: L - Low Risk
Surface: Woodchip



Finding: There is or are fixings missing on the item

Action: Replace all missing fixings



i 6 - Low Risk (Finding 9)

Item: Activity Equipment - Multi Play (Junior)
Manufacturer: Not Identified

Risk Level: L - Low Risk
Surface: Woodchip



Finding: The item has exposed edges and corners with a radius of less than 3mm and fails the requirements of BS EN 1176
Action: Provide a 3mm radius to all exposed edges and corners



i 8 - Low Risk (Finding 10)

Item: Activity Equipment - Multi Play (Junior)
Manufacturer: Not Identified

Risk Level: L - Low Risk
Surface: Woodchip



Finding: Swing bays and/or their beams should only be attached to other equipment where specific measures are undertaken to segregate them from other activities such as enclosures, swing barriers or a 1500mm area

Action: Monitor - No remedial work recommended

i 10 - Low Risk (Finding 11)

Item: Activity Equipment - Multi Play (Junior)
Manufacturer: Not Identified

Risk Level: L - Low Risk
Surface: Woodchip



Finding: This design of swing joint has been known to fail on the weld connecting the joint to the threaded stud

Action: We would recommend that the joint be dismantled and checked on a regular basis or a Secondary Safety Device be fitted



i 6 - Low Risk (Finding 12)

Item: Activity Equipment - Multi Play (Junior)
Manufacturer: Not Identified

Risk Level: L - Low Risk
Surface: Woodchip



Finding: A number of fixing(s) have worked loose

Action: Secure all loose fixings

i 5 - Very Low Risk (Finding 13)

Item: Activity Equipment - Multi Play (Junior)
Manufacturer: Not Identified

Risk Level: V - Very Low Risk
Surface: Woodchip



Finding: The surfacing dimensions are short and do not meet with the requirements of the current applicable standard

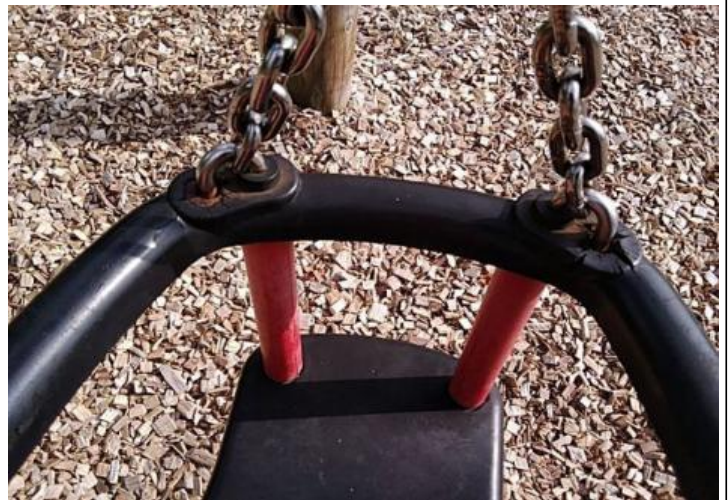
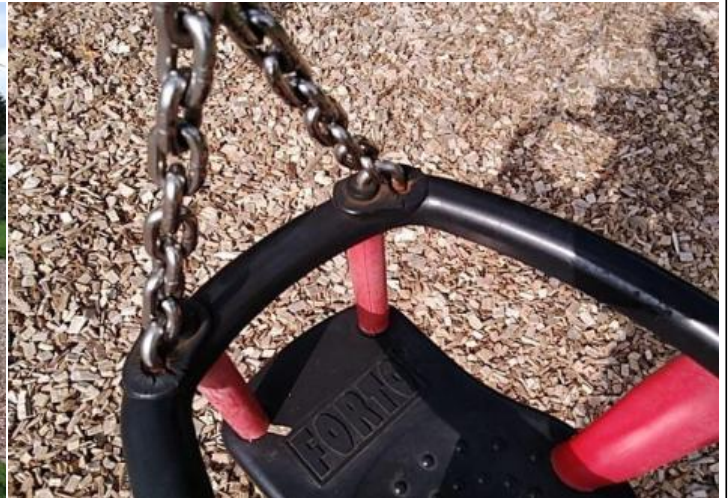
Action: Monitor - no remedial action recommended



i 8 - Low Risk (Finding 14)

Item: Activity Equipment - Multi Play (Junior)
Manufacturer: Not Identified

Risk Level: L - Low Risk
Surface: Woodchip



Finding: There is surface corrosion present on the fixings

Action: Replace the corroded fixings



i 5 - Very Low Risk (Finding 1)

Item: Activity Equipment - Log Climber
Manufacturer: Not Identified

Risk Level: V - Very Low Risk
Surface: Woodchip



Finding: The surfacing dimensions are short and do not meet with the requirements of the current applicable standard

Action: Monitor - no remedial action recommended



i 8 - Low Risk (Finding 2)

Item: Activity Equipment - Log Climber
Manufacturer: Not Identified

Risk Level: L - Low Risk
Surface: Woodchip



Finding: There are falls in excess of 600mm between adjacent components on the structure, in contravention of the recommendations set out in BS EN 1176 Part 1; 4.2.8.4

Action: Monitor - No remedial work recommended



5 - Very Low Risk (Finding 3)

Item: Activity Equipment - Log Climber
Manufacturer: Not Identified

Risk Level: V - Very Low Risk
Surface: Woodchip



Finding: The net anchor forms a hard object within the impact area of the equipment in contravention of the requirements of BS EN 1176 Part 1

Action: Monitor - No remedial work recommended



i 8 - Low Risk (Finding 4)

Item: Activity Equipment - Log Climber
Manufacturer: Not Identified

Risk Level: L - Low Risk
Surface: Woodchip



Finding: The depth of the loose fill surfacing is lower than the recommended depth specified in BS EN 1176 for a fall height over 2.0m. A minimum depth of 400mm is recommended (including an extra 100mm to allow for compaction and displacement as per BS EN 1176 Part 1 - Table 4)

Action: Top up loosefill to recommended levels



i 5 - Very Low Risk (Finding 5)

Item: Activity Equipment - Log Climber
Manufacturer: Not Identified

Risk Level: V - Very Low Risk
Surface: Woodchip



Finding: The connecting links are in excess of 8.6mm and less than 12mm and fail the requirements of BS EN 1176 Part 1; clause 4.2.13, Chains

Action: Monitor use and replace with compliant links at the next maintenance cycle

i 6 - Low Risk (Finding 6)

Item: Activity Equipment - Log Climber
Manufacturer: Not Identified

Risk Level: L - Low Risk
Surface: Woodchip



Finding: The item is slightly loose in its foundations

Action: Monitor for any further deterioration and repair as required



i 4 - Very Low Risk (Finding 7)

Item: Activity Equipment - Log Climber
Manufacturer: Not Identified

Risk Level: V - Very Low Risk
Surface: Woodchip



Finding: There is/are bolt cap covers missing or damaged on the item

Action: Replace missing or damaged bolt cap covers

i 8 - Low Risk (Finding 1)

Item: Activity Equipment - Multi Play (Junior)
Manufacturer: Not Identified

Risk Level: L - Low Risk
Surface: Woodchip



Finding: The depth of the loose fill surfacing is lower than the recommended depth specified in BS EN 1176; the free height of fall of the equipment is less than 2.0m and a minimum of 300mm depth should be provided (including an extra 100mm to allow for compaction and displacement as per BS EN 1176 Part 1 - Table 4)

Action: Top up loose fill surfacing to recommended levels



i 5 - Very Low Risk (Finding 2)

Item: Activity Equipment - Multi Play (Junior)
Manufacturer: Not Identified

Risk Level: V - Very Low Risk
Surface: Woodchip



Finding: The net anchor forms a hard object within the impact area of the equipment in contravention of the requirements of BS EN 1176 Part 1

Action: Monitor - No remedial work recommended

i 4 - Very Low Risk (Finding 3)

Item: Activity Equipment - Multi Play (Junior)
Manufacturer: Not Identified

Risk Level: V - Very Low Risk
Surface: Woodchip



Finding: The platform provides access to a steep play element via a barrier with a width exceeding 1200mm and this fails to meet the requirements of BS EN1176 Part 1.

Action: Monitor - No remedial work recommended



i 6 - Low Risk (Finding 4)

Item: Activity Equipment - Multi Play (Junior)
Manufacturer: Not Identified

Risk Level: L - Low Risk
Surface: Woodchip



Finding: The height of the slide runout is in excess of 350mm and fails the requirements of BS EN 1176: Part 3

Action: Top up surfacing to comply

i 5 - Very Low Risk (Finding 5)

Item: Activity Equipment - Multi Play (Junior)
Manufacturer: Not Identified

Risk Level: V - Very Low Risk
Surface: Woodchip



Finding: There is/are finger entrapment/s in the platform and the item fails to meet the requirements of BS EN 1176 Part 1 4.2.7.6 Entrapment of fingers

Action: Monitor - No remedial work recommended



i 6 - Low Risk (Finding 6)

Item: Activity Equipment - Multi Play (Junior)
Manufacturer: Not Identified

Risk Level: L - Low Risk
Surface: Woodchip



Finding: A number of fixing(s) have worked loose

Action: Secure all loose fixings



i 5 - Very Low Risk (Finding 7)

Item: Activity Equipment - Multi Play (Junior)
Manufacturer: Not Identified

Risk Level: V - Very Low Risk
Surface: Woodchip



Finding: The item fails to meet the requirements of BS EN 1176 Part 1 4.2.7.2 head and neck entrapment in the barriers and/or steps

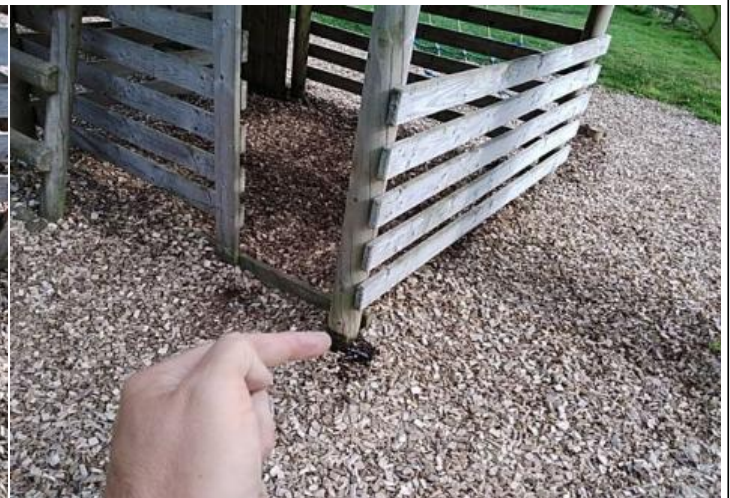
Action: Monitor - No remedial work recommended



i 6 - Low Risk (Finding 8)

Item: Activity Equipment - Multi Play (Junior)
Manufacturer: Not Identified

Risk Level: L - Low Risk
Surface: Woodchip



Finding: There is some evidence of rot in the timber

Action: Monitor for any further deterioration and replace as required



i 4 - Very Low Risk (Finding 9)

Item: Activity Equipment - Multi Play (Junior)
Manufacturer: Not Identified

Risk Level: V - Very Low Risk
Surface: Woodchip



Finding: There is/are bolt cap covers missing or damaged on the item

Action: Replace missing or damaged bolt cap covers



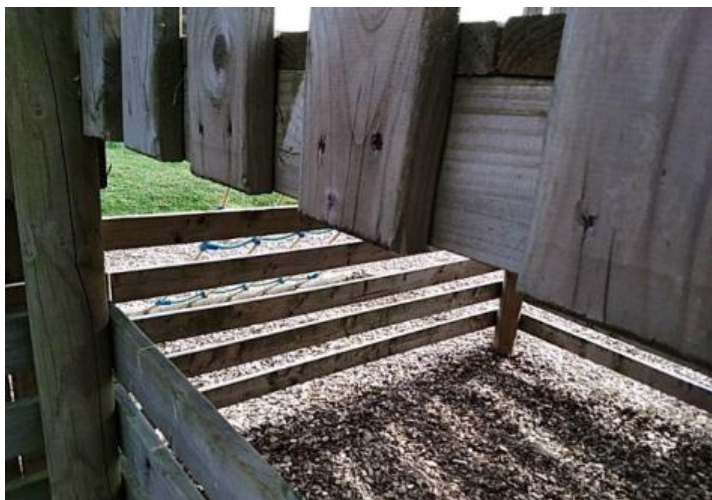
i 6 - Low Risk (Finding 10)

Item: Activity Equipment - Multi Play (Junior)
Manufacturer: Not Identified

Risk Level: L - Low Risk
Surface: Woodchip



Finding: Parts of the timber are rough or splintered



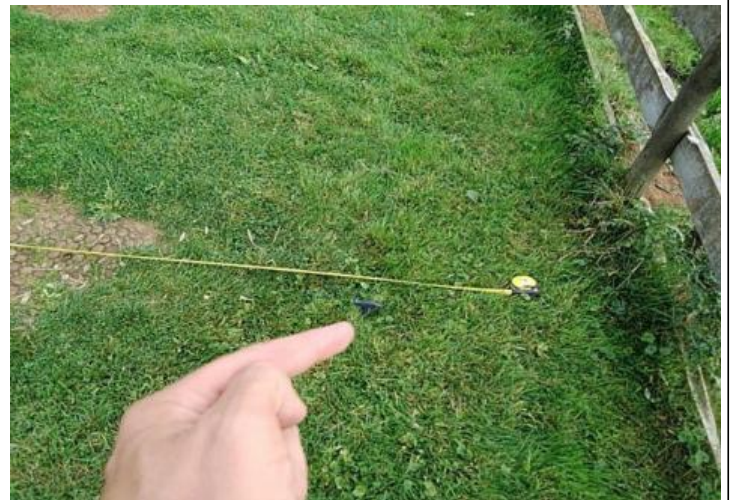
Action: Remove all rough or sharp edges



i 5 - Very Low Risk (Finding 1)

Item: Swings - Basket Swing - Type 1
Manufacturer: Not Identified

Risk Level: V - Very Low Risk
Surface: Grass Matrix Tiles



Finding: The surfacing dimensions are short and do not meet with the requirements of the current applicable standard

Action: Monitor - no remedial action recommended



i 4 - Very Low Risk (Finding 2)

Item: Swings - Basket Swing - Type 1
Manufacturer: Not Identified

Risk Level: V - Very Low Risk
Surface: Grass Matrix Tiles



Finding: BS EN 1176 requires an additional 0.5m of unobstructed space at each end of the swing surfacing area. This is a relatively low risk finding and no remedial action is recommended at this point.

Action: Monitor - No remedial work recommended



i 8 - Low Risk (Finding 3)

Item: Swings - Basket Swing - Type 1
Manufacturer: Not Identified

Risk Level: L - Low Risk
Surface: Grass Matrix Tiles



Finding: The edges of the grass mat surface have not been installed in accordance with the API Code of Practice
Action: Tuck in edges of grass mat to remove trip hazards

i 6 - Low Risk (Finding 4)

Item: Swings - Basket Swing - Type 1
Manufacturer: Not Identified

Risk Level: L - Low Risk
Surface: Grass Matrix Tiles



Finding: Parts of the timber are rough or splintered
Action: Remove all rough or sharp edges



i 10 - Low Risk (Finding 5)

Item: Swings - Basket Swing - Type 1
Manufacturer: Not Identified

Risk Level: L - Low Risk
Surface: Grass Matrix Tiles



Finding: All fixings have worked loose

Action: Secure all loose fixings

i 8 - Low Risk (Finding 1)

Item: Swings - 1 Bay 2 Seat (Flat)
Manufacturer: Not Identified

Risk Level: L - Low Risk
Surface: Grass Matrix Tiles



Finding: The edges of the grass mat surface have not been installed in accordance with the API Code of Practice

Action: Tuck in edges of grass mat to remove trip hazards



i 5 - Very Low Risk (Finding 2)

Item: Swings - 1 Bay 2 Seat (Flat)
Manufacturer: Not Identified

Risk Level: V - Very Low Risk
Surface: Grass Matrix Tiles



Finding: Fixing Pins have been installed in the impact areas of the grass mats **Action:** Remove pins from impact areas



i 5 - Very Low Risk (Finding 3)

Item: Swings - 1 Bay 2 Seat (Flat)
Manufacturer: Not Identified

Risk Level: V - Very Low Risk
Surface: Grass Matrix Tiles



Finding: The surfacing dimensions are short and do not meet with the requirements of the current applicable standard

Action: Monitor - no remedial action recommended



i 4 - Very Low Risk (Finding 4)

Item: Swings - 1 Bay 2 Seat (Flat)
Manufacturer: Not Identified

Risk Level: V - Very Low Risk
Surface: Grass Matrix Tiles



Finding: BS EN 1176 requires an additional 0.5m of unobstructed space at each end of the swing surfacing area. This is a relatively low risk finding and no remedial action is recommended at this point.

Action: Monitor - No remedial work recommended



i 10 - Low Risk (Finding 5)

Item: Swings - 1 Bay 2 Seat (Flat)
Manufacturer: Not Identified

Risk Level: L - Low Risk
Surface: Grass Matrix Tiles



Finding: This design of swing joint has been known to fail on the weld connecting the joint to the threaded stud

Action: We would recommend that the joint be dismantled and checked on a regular basis or a Secondary Safety Device be fitted

i 6 - Low Risk (Finding 6)

Item: Swings - 1 Bay 2 Seat (Flat)
Manufacturer: Not Identified

Risk Level: L - Low Risk
Surface: Grass Matrix Tiles



Finding: The swing seat connectors are loose

Action: Tighten to secure



i 10 - Low Risk (Finding 7)

Item: Swings - 1 Bay 2 Seat (Flat)
Manufacturer: Not Identified

Risk Level: L - Low Risk
Surface: Grass Matrix Tiles



Finding: All fixings are loose

Action: Secure all loose fixings